



PRESENTATION SERVICES STATIONS FOR PROJECTS OF SERVICE



COMMON SERVICES IN PETROFILLING STATION

PRESENTATION

BUROTEC is a business group with an international presence that has over 25 years of experience providing technical consulting services and engineering, being specialized consulting occupational risk prevention, implementation of management systems, inspection equipment, audits, development and management engineering projects, among others.

Our team consists of highly qualified and specialized personnel in different sectors for which we work, bringing all their experience and dedication for the good achievement of the project, and being our main goal the satisfaction of our customers.

Visit our web page



MISSION, VISION AND VALUES

OUR MISSION

BUROTEC helps its clients in all aspects necessary for expansion and development. In the initial phase, from designing the project and obtaining the necessary licenses and authorizations. In the implementation phase of the project, by ensuring quality requirements, environmental and safety through audits, inspections and implementation of management systems. Finally, during operation and / or marketing of the service, through registration, approval and certification of the same to the competent bodies.

OUR VISION

The vision of BUROTEC it is to be a global consulting and engineering services reference in the domestic market, with international presence, which distinguishes itself from the competition for the customer service philosophy and dedication, whose ultimate goal is not only material.

NUESTOS VALUES

BUROTEC values statement:

- **Focus on the customer and their needs**
- **Excellence and sustainability**
- **Integrity and professionalism**
- **Transparent communication**



OUR TEAM

- BUROTEC technical team is composed of engineers highly specialized in electric, construction, industrial sectors among others.
- Extensive experience in product inspection, supplier audits, labor and industrial safety engineering service stations.
- BUROTEC staff:
 - Hired 80 professionals in Spain.
 - 300 auditors / external international inspectors:
 - ✓ Zone Asia 100 auditors / inspectors.
 - ✓ Zone Europe 40 auditors / inspectors.
 - ✓ North America Zone 60 auditors / inspectors.
 - ✓ Central and South America Zone 60 auditors / inspectors.
 - ✓ Middle East zone 40 auditors / inspectors.



Accreditations

- CERTIFICATES ISO 9001, ISO 14001 and OHSAS 18001 ISSUED BY **AENOR**
- **ACCREDITATION AS PREVENTION SERVICE FOR NON whole country** ISSUED BY THE DIRECTORATE GENERAL OF WORK OF THE ECONOMY AND EMPLOYMENT COUNSELING COMMUNITY OF MADRID
- **ACCREDITATION TO TEACH THE SUPERIOR TECHNICIAN COURSE IN OCCUPATIONAL RISK PREVENTION FOR WORK SAFETY** GENERAL DIRECTION FOR COMMUNITY WORK OF MADRID
- **ACCREDITATION ISO / IES 17020 by ENAC** INSPECTION ENTITY FOR INSPECTION FACILITY REGULATORY AND ENVIRONMENTAL INDUSTRIAL SAFETY
- **REPRO CERTIFICATE No. 300545**
- NOWADAYS **BUROTEC ES SOCIO MEMBER FROM:**
 - **AEC:** SPANISH ASSOCIATION OF QUALITY
 - **ANAVAM:** NATIONAL ASSOCIATION OF ACCOUNTANTS AND VERIFIERS MEDIOAMBIENTALES
 - **AENOR:** SPANISH ASSOCIATION OF STANDARDIZATION AND CERTIFICATION



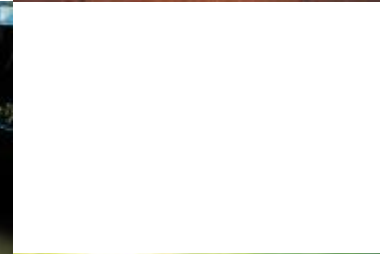
OUR OFFICES

- Madrid (Spain) - Headquarters
- Valencia Spain)
- Lisbon Portugal)
- The Hague (Netherlands)
- Houston (EE. UU.)
- Bogota Colombia)
- Luanda (Angola)
- (Kuwait)
- Dammam (Saudi Arabia)
(opening in 2016)
- Shanghai (China)



SECTORS FOR WHICH WE WORK

- OIL & GAS
- INDUSTRIAL / CONSTRUCTION PRODUCTS
- TELECOMMUNICATIONS
- AUTOMOCION
- RAILWAY
- ENVIRONMENT
- Electricity and energy
- MEDICAL DEVICES AND HEALTH SECTOR
- COSMETICS AND CHEMICAL PRODUCTS SECTOR
- CONSUMER PRODUCTS



SERVICE PROJECTS FOR STATIONS

SERVICE PROJECTS FOR STATIONS OFFERING BUROTEC

In BUROTEC we are specialized in management and project management service station fuel, having participated in **more than 5000 performances** related to such facilities in all phases: design, implementation, management and control of work permits and licenses management, quality control, environment, safety and health, and for leading multinational companies in the sector: **REPSOL, CAMPSA, PETRONOR CEPSA, BP OIL, FLAGs ESSO TERPEL, GULF, CITGO**, Among others, providing solutions to all the needs that the customer may require in this business area:

- 1.Engineering and project development service station.
- 2.Licenses and authorizations for service stations
- 3.Works direction and control of service stations
- 4.labor and industrial safety service station
- 5.environmental services for service stations.



BROAD EXPERIENCE IN THIS FIELD WE CAN BE ABLE TO PROVIDE A SERVICE ENGINEERING INTEGRAL TO THE DESIGN AND CONSTRUCTION OF FACILITIES
ADDITIONAL SERVICES FOR STATIONS, CONDUCTING ALL JOBS NEEDED FROM PLANNING TO EXECUTION OF THEMSELVES THE .

SERVICE PROJECTS FOR STATIONS

OFFERING BUROTEC

ENGINEERING AND DEVELOPMENT PROJECTS EESS

- New construction project service station
- Makeover projects
- Demolition project EESS
- Proposed a major overhaul in a service station
- Less reform project in a service station
- Washing projects
- Project access to a service station
- Installation projects (HVAC, plumbing, electricity, fire, etc.)
- Layouts.
- Architectural design.
- Construction management.
- elevations
- Feasibility studies
- Rising taquimétrico / topographical

LICENSES AND PERMITS EESS

- License greatest work
- Minor works license
- Activity license
- First occupation license
- Opening or operating license
- reported acts
- Industrial enrollment record
- Discharge authorization
- AIDC
- Hiring light
- Hiring water
- Recruitment Phone
- Previous management bodies to the execution of the project.
- License demolition / dismantling
- Management utility companies.

ADDRESS AND CONTROL WORKS OF EESS

- Acta stakeout or beginning of work
- Final completion certificate
- partial certifications and final settlement of the work units executed.
- Control and stakeout adaptation to the project
- Changes to the draft that come as a result of the state of the work.
- Reception in the work of construction products for control
- Updating the Order Book and Attendance

LABOR AND INDUSTRIAL SAFETY IN EESS

- Safety and Health Coordinator jobbing
- Security supervisor
- Preparation of studies and safety plans
- Development of risk assessments
- Preparation of the document for the protection of workers from explosive atmospheres
- Georadar prospecting services (GPR)
- ATEX certificate issuance
- Drafting emergency plans
- environmental measurements.
- Define preventive actions.
- Management manual

ENVIRONMENTAL SERVICES FOR EESS

- Environmental impact studies
- Environmental monitoring plans
- Noise studies
- geotechnical studies
- Research quality soil
 - initial characterization
 - analytical tests
 - Preparation of report (IPS)
- hydrogeological study
 - Catchment: Recognition field, analytical, Development of the feasibility report
 - Discharges: Study of soil permeability
- energy savings.
- Waste management plan of construction and demolition
- Recycling and reuse of waste
- Solutions discharges
- Solutions emissions
- Renewable energy

SERVICE PROJECTS FOR STATIONS

CASE STUDY / CASE 1

- DATA PROJECT

SITUATION OF THE PROJECT	Service Station "THE SABINAR" RM-12 motorway sense KP 11 Murcia, Los Belones - CARTAGENA (MURCIA, SPAIN)
TITLE OF THE PROJECT	INSTALLATION OF EQUIPMENT RECYCLING WATER WASHING EXISTING COVERING TRANSFER AND CONDITIONING WITH LIGHT aspirators EXISTING BUILDING AND DISMANTLING LUBRICENTRO EXISTS
PROJECT DESCRIPTION	<p>The intervention is to modernize providing stage of waste and water recycling system to existing sanitation washed with the intention of an environmental improvement achieved and try to recover some of the water for reuse existing bridge washing.</p> <p>Also a small building is dismantled Lubricentro intended to permit the transfer and modernization by conditioning the existing vacuum with slight tented fully covers provisional and detachably, being enabled another space defined for the use thereof.</p> <p>This project, therefore, is a modernization and improvement or upgrading of existing facilities and activities as in the case of washes and vacuums; or eliminates, as in the case of small building for a lube which is dismantled.</p>

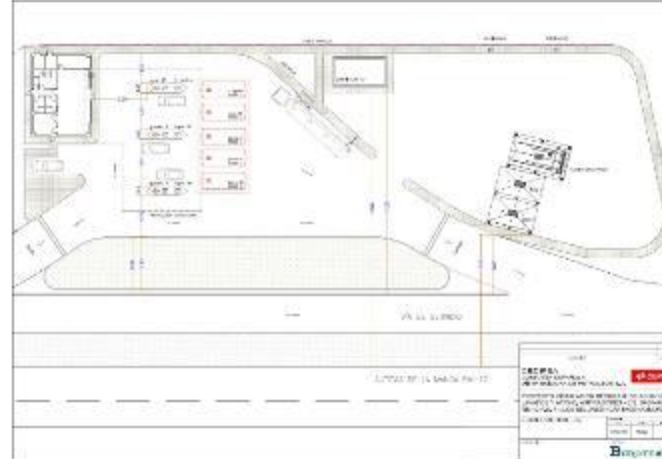
SERVICE PROJECTS FOR STATIONS

CASE STUDY / CASE 1

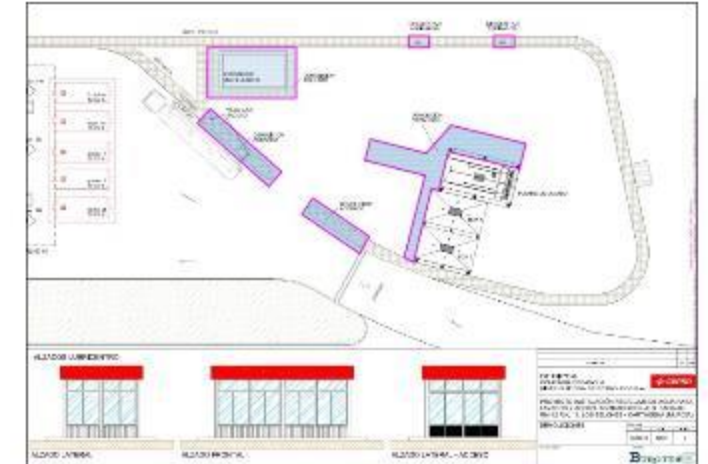
- PROJECT PLANS**



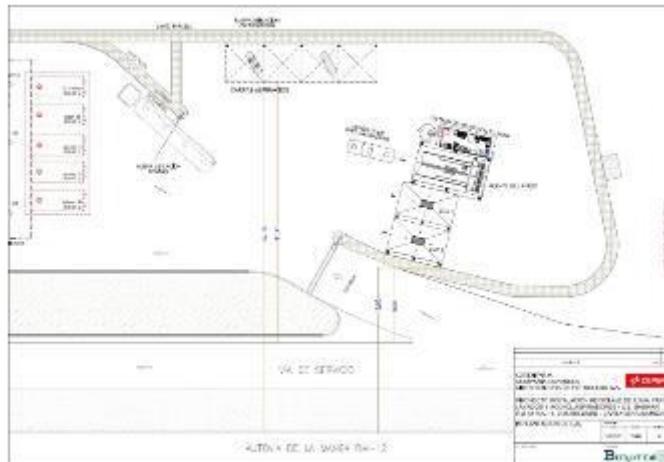
SITUATION



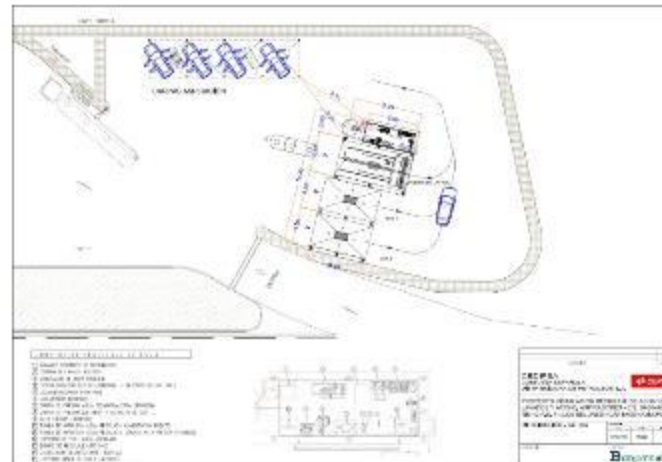
ACTUAL STATE



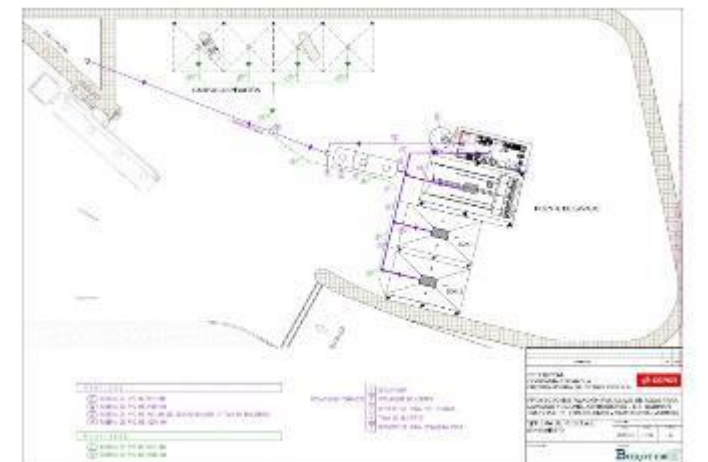
DEMOLITION



IMPLANTATION



DISTRIBUTION - COTAS

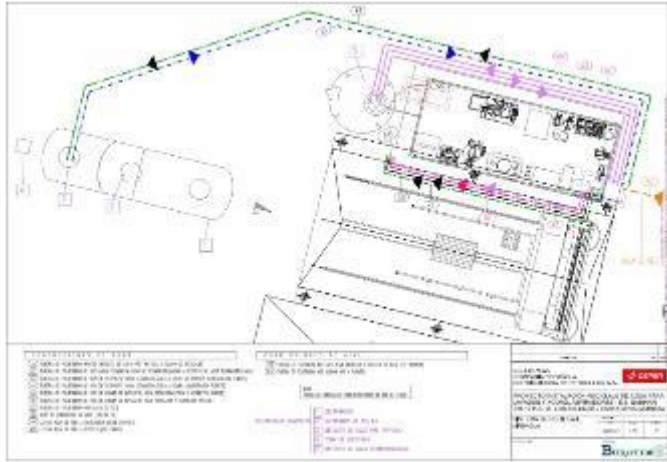


RECYCLING SYSTEM /
Sanema

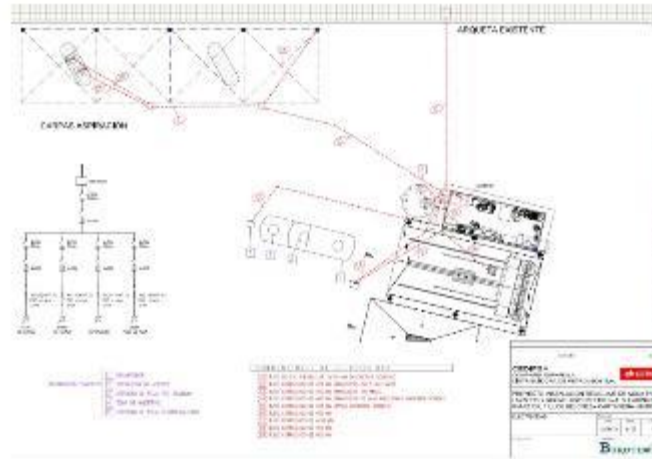
SERVICE PROJECTS FOR STATIONS

CASE STUDY / CASE 1

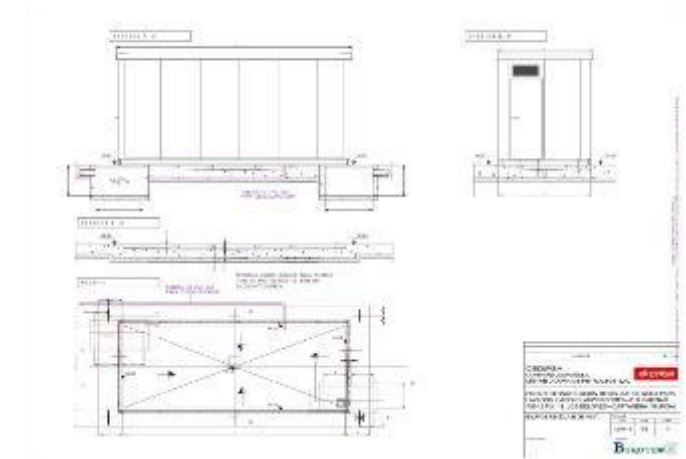
- PROJECT PLANS**



RECYCLING SYSTEM / air-water



ELECTRICITY



WATER RECYCLING EQUIPMENT

SERVICE PROJECTS FOR STATIONS

CASE STUDY / CASE 1

- PHOTOGRAPHS OF THE PROJECT



BEFORE



AFTER

SERVICE PROJECTS FOR STATIONS

CASE STUDY / CASE 2

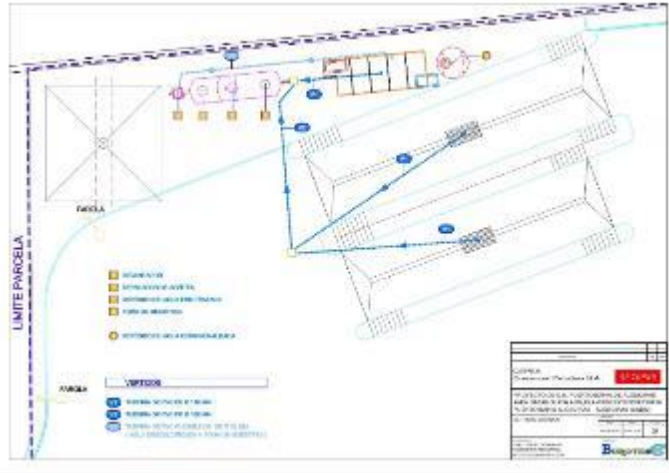
- DATA PROJECT

SITUATION OF THE PROJECT	"BAHIA DE ALGECIRAS PUERTO" Service Station Gitande Ayala Avenue s / n, Isla Verde area outside 69. BAHIA PUERTO ALGECIRAS, ALGECIRAS (CADIZ, SPAIN)
TITLE OF THE PROJECT	INSTALLATION OF TWO BOXES TRUCK WASH MANUAL
PROJECT DESCRIPTION	It is a new EDS with a washing zone. 2 platforms truck manual washing are performed, with gateways in height to facilitate washing at higher altitudes. They will have: Water lance pressure on pole vault height of 4.70 meters Technical room accommodation equipment Moat - sink for evacuation of water from washing.

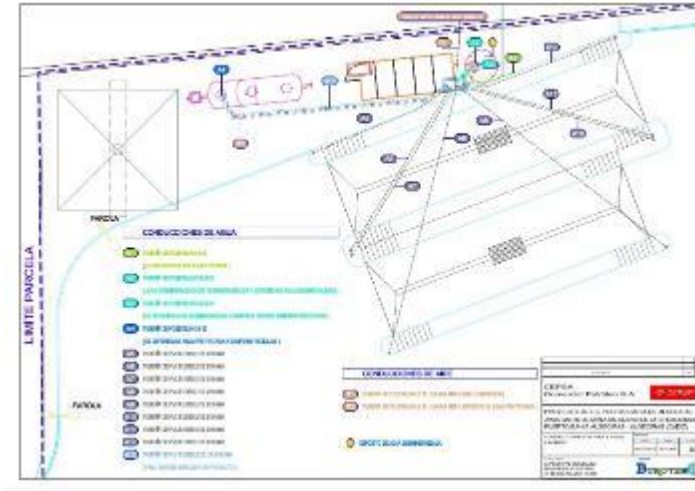
SERVICE PROJECTS FOR STATIONS

CASE STUDY / CASE 2

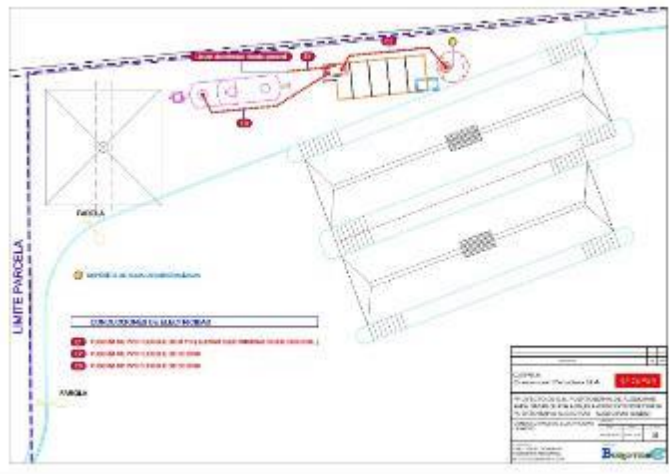
- PROJECT PLANS**



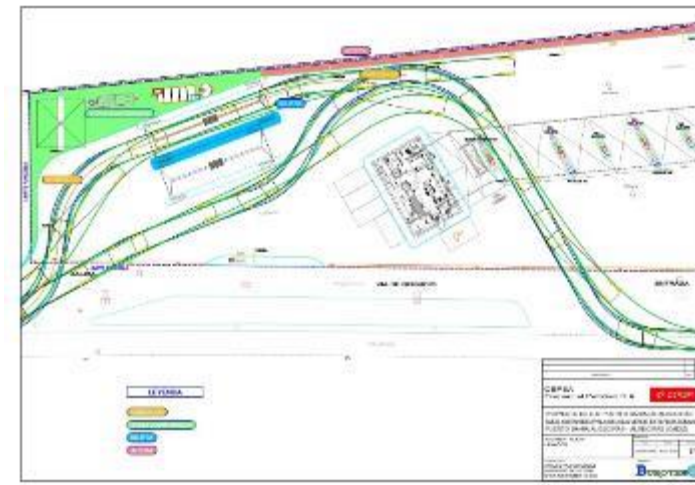
WASTE



CONDUCCIONES air and water



Electricity mains



PAVING / TRACKING

SERVICE PROJECTS FOR STATIONS

CASE STUDY / CASE 2

- PHOTOGRAPHS OF THE PROJECT



BEFORE



AFTER

SERVICE PROJECTS FOR STATIONS

CASE STUDY / CASE 3

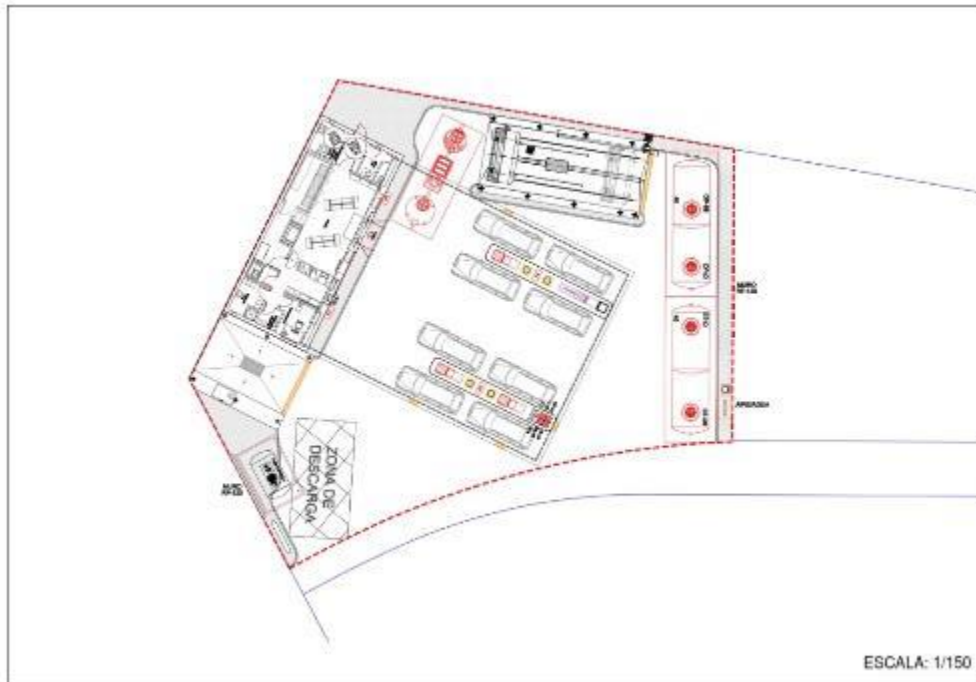
- DATA PROJECT

SITUATION OF THE PROJECT	Service station "COOPERATIVE TAXIS CHRISTOPHER S." Calle Diego Vega Sarmiento, 70 Las Palmas (LAS PALMAS, SPAIN)
TITLE OF THE PROJECT	3D visualization TRANSFORMATION OF COOPERATIVE TAXIS A SERVICE STATION WITH A BOX OF WASHES.
PROJECT DESCRIPTION	This is a layout on an existing installation of taxi cooperative. It was done in 3D so you could visualize more intuitively. The moment has not been carried out remodeling, which included a box of washing off of EDS

SERVICE PROJECTS FOR STATIONS

CASE STUDY / CASE 3

- PROJECT PLANS



PLANT



ALZADOS

SERVICE PROJECTS FOR STATIONS

CASE STUDY / CASE 3

- 3D DISPLAYS OF THE PROJECT



SERVICE PROJECTS FOR STATIONS

CASE STUDY / CASE 4

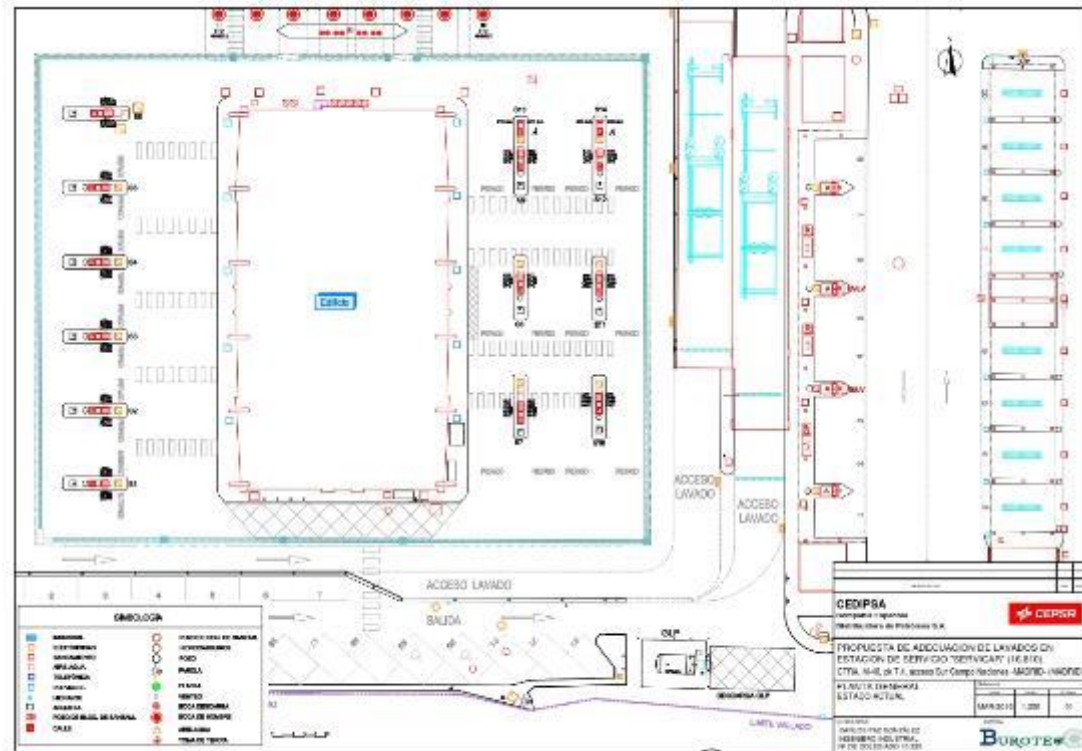
- DATA PROJECT

SITUATION OF THE PROJECT	Service Station "SERVICAR" M-40, PK 7.4 - Access to the field south of nations MADRID (MADRID, SPAIN)
TITLE OF THE PROJECT	PROPOSAL FOR REMODELING OF WASHES
PROJECT DESCRIPTION	<p>This is a proposal for remodeling of washes, including the following works:</p> <ul style="list-style-type: none">- Replacement of polycarbonate covers pit washing by new panels of the same material- Replacement of existing side panels Boxes washed by new panels sandwich panel- Replacement of roof agglomerate room technician roof sandwich panel- Painted metal and sanitized and canopy structure washing boxes in the same existing colors.- Chopped and sanitized pavement entrance area carwash- Expansion and sanitation cleaning grid.- Replacement of gratings for "effective" and change location of electrical wiring.- Placing lifeline in building.- Clean, sanitized and waterproofing cover

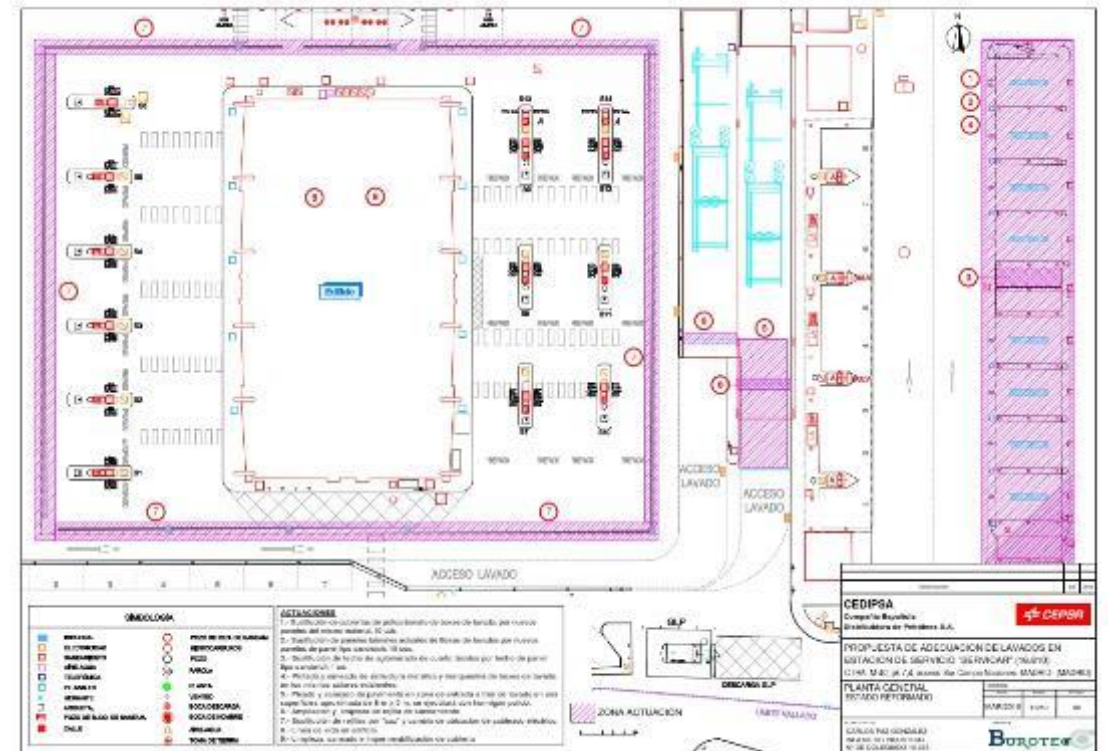
SERVICE PROJECTS FOR STATIONS

CASE STUDY / CASE 4

- PROJECT PLANS**



GENERAL PLANT - CURRENT STATUS



FLOOR GENERAL - STATE RENOVATED

SERVICE PROJECTS FOR STATIONS

CASE STUDY / CASE 4

- PHOTOGRAPHS OF THE PROJECT



SERVICE PROJECTS FOR STATIONS

CASE STUDY / CASE 5

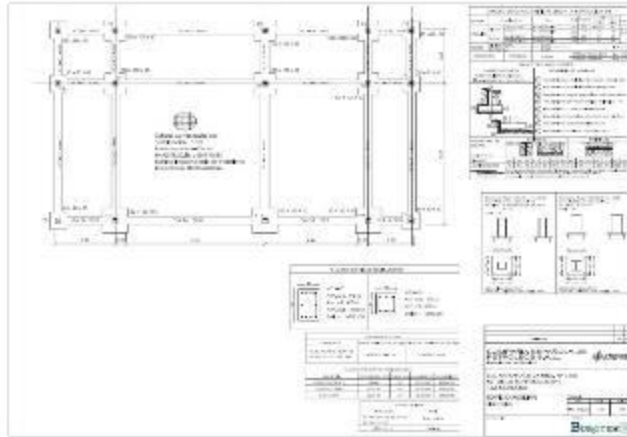
- DATA PROJECT

SITUATION OF THE PROJECT	Service Station "ARROYO OF HONEY" N-IVA PK: 405 CORDOBA (CORDOBA, SPAIN)
TITLE OF THE PROJECT	COMPREHENSIVE REFORM PROJECT SHOP SERVICE STATION
PROJECT DESCRIPTION	Construction of a factory building 17.280x9.500x3.700 mm external dimensions with a floor area of 165.19 m2.

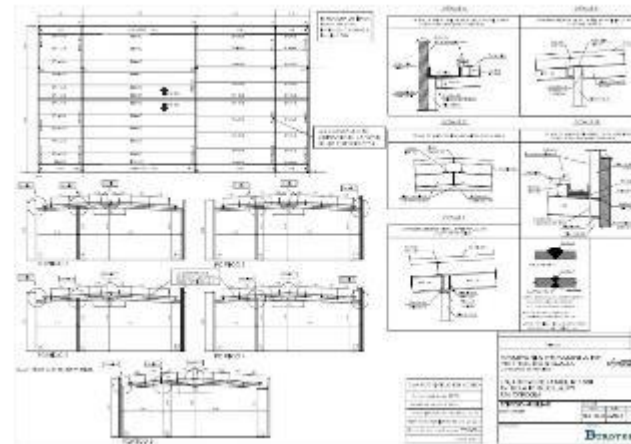
SERVICE PROJECTS FOR STATIONS

CASE STUDY / CASE 5

- PROJECT PLANS**



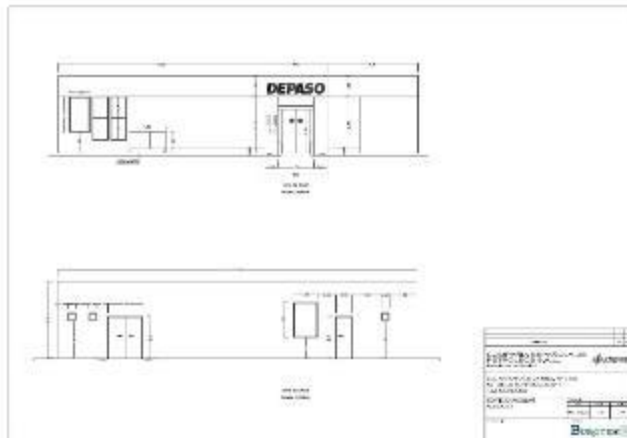
FOUNDATIONS



STRUCTURE



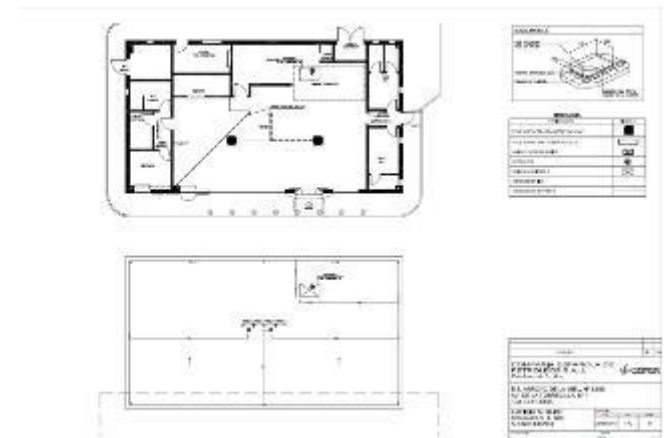
DISTRIBUTION AND ELEMENTS



ALZADOS



ELECTRICITY INSTALLATION



INSTALLATION CONTRAINCENDIOS

SERVICE PROJECTS FOR STATIONS

CASE STUDY / CASE 5

- PHOTOGRAPHS OF THE PROJECT



BEFORE



AFTER

SERVICE PROJECTS FOR STATIONS

CASE STUDY / CASE 6

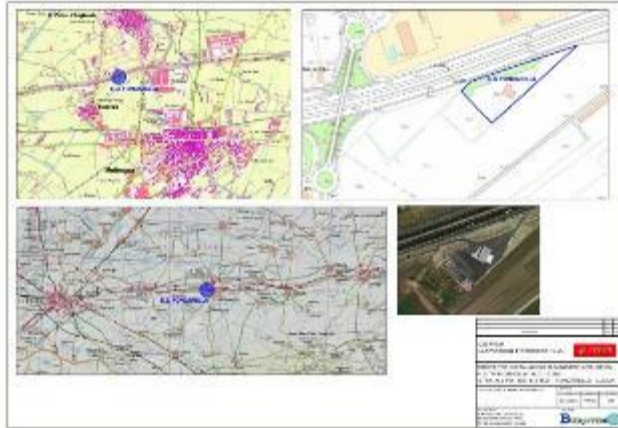
- DATA PROJECT

SITUATION OF THE PROJECT	Service Station "Fondarella" A-2 PK: 485.1 Fondarella (Lerida, SPAIN)
TITLE OF THE PROJECT	ADBLUE SUPPLY PROJECT INSTALLATION
PROJECT DESCRIPTION	Equipment installation project for supplying Adblue

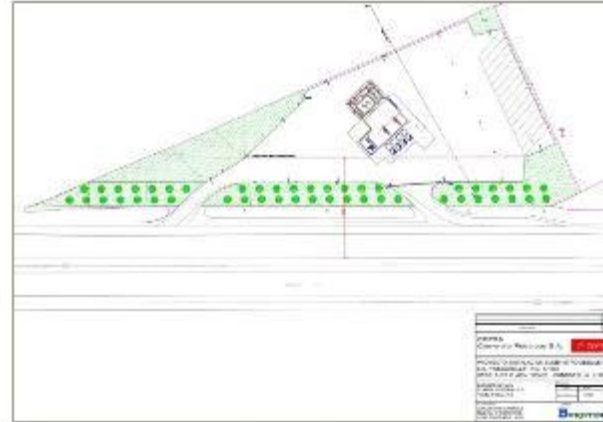
SERVICE PROJECTS FOR STATIONS

CASE STUDY / CASE 6

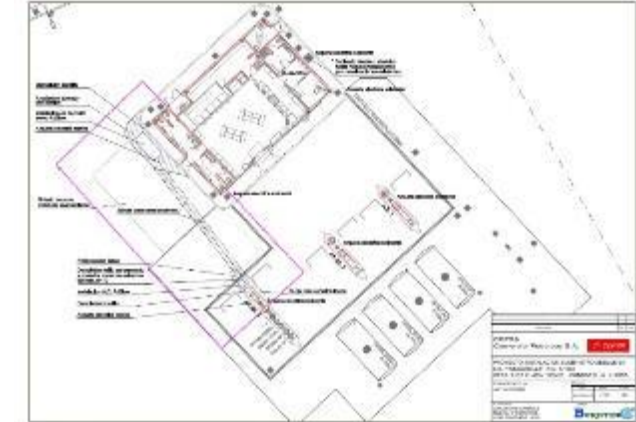
- PROJECT PLANS**



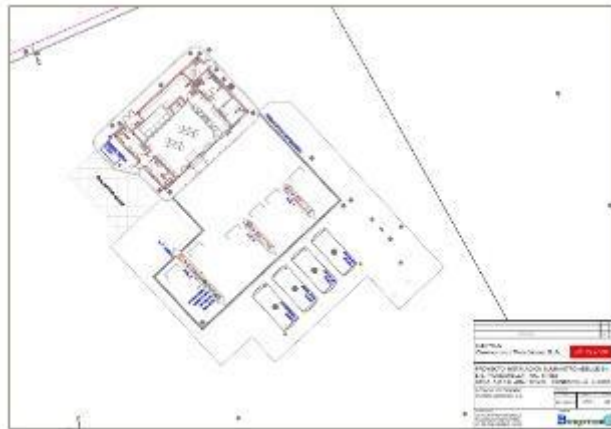
LOCATION AND POSITIONING



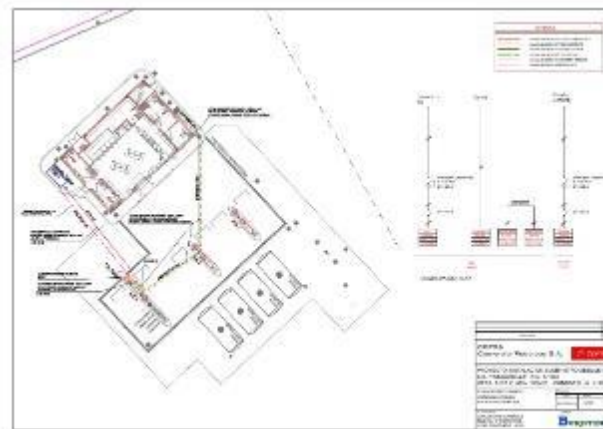
ACTUAL STATE



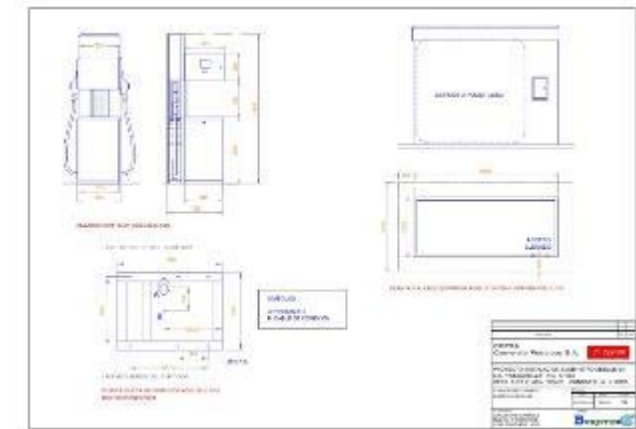
CURRENT STATUS - PERFORMANCES



STATE RENOVATED - GENERAL PLANT



STATE RENOVATED - PIPELINES



STATE RENOVATED - EQUIPMENT ADBLUE

SERVICE PROJECTS FOR STATIONS

CASE STUDY / CASE 6

- PHOTOGRAPHS OF THE PROJECT



BEFORE



AFTER

SOME OF OUR CLIENTS - OIL & GAS SECTOR



BURROTEC